



Legend

- Non-Cropland
- Cropland
- CRP
- Iowa PLSS
- Tract Boundary
- Iowa Roads

Wetland Determination Identifiers

- Restricted Use
- ▼ Limited Restrictions
- Exempt from Conservation
- Compliance Provisions

Tract Cropland Total: 23.92 acres

2021 Program Year

Map Created March 19, 2021

Farm 6154

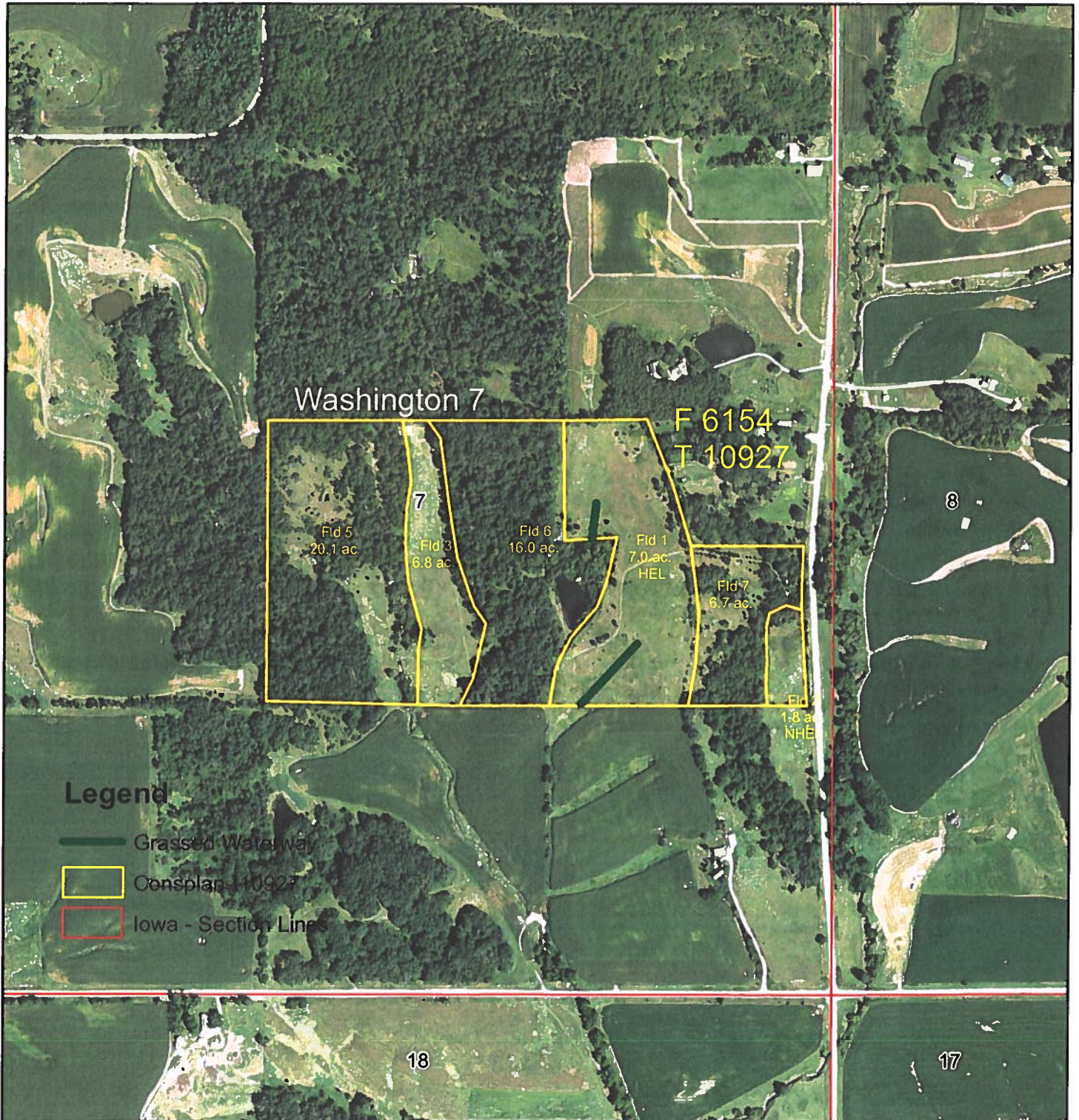
Tract 10927

United States Department of Agriculture (USDA) Farm Service Agency (FSA) maps are for FSA Program administration only. This map does not represent a legal survey or reflect actual ownership; rather it depicts the information provided directly from the producer and/or National Agricultural Imagery Program (NAIP) imagery. The producer accepts the data 'as is' and assumes all risks associated with its use. USDA-FSA assumes no responsibility for actual or consequential damage incurred as a result of any user's reliance on this data outside FSA Programs. Wetland identifiers do not represent the size, shape, or specific determination of the area. Refer to your original determination (CPA-026 and attached maps) for exact boundaries and determinations or contact USDA Natural Resources Conservation Service (NRCS).

Customer(s): HERITAGE VALLEY LLC
District: POWESHIEK SOIL & WATER CONSERVATION DISTRICT

Field Office: MALCOM SERVICE CENTER
Agency: Poweshiek County NRCS
Assisted By: DOUGLAS RUOPP

Legal Description: T79n-R16W, Washington 7, T10927



Prepared with assistance from USDA-Natural Resources Conservation Service



Conservation Plan

HERITAGE VALLEY LLC
 4459 135TH ST
 MONTEZUMA, IA 50171

OBJECTIVE(S)

To conserve natural resources while maintaining profitability. Implementation of Resource Management System will create a sustainable Ag System.

Crop

Tract: 10927

Conservation Crop Rotation(328)

A Crop Rotation of Corn Soybeans will be used on these fields. A more conservative rotation may be used in place of this.

Field	Planned Amount	Month	Year	Applied Amount	Date
1	7. ac	11	2018		
Total:	7. ac				

Grassed Waterway(412)

All ephemeral gully erosion must be controlled. Grassed waterways shown on the map may be needed to control ephemeral gully erosion.

Field	Planned Amount	Month	Year	Applied Amount	Date
1	0.6 ac	11	2018		
Total:	0.6 ac				

Residue and Tillage Management, Reduced Till(345)

A corn soybean rotation with the following Conservation Tillage system will be used:

Soybean Stubble may be Spring Mulch Tilled leaving at least 30% of the ground covered by residue after planting Corn in the Spring.

Corn Stalks can be Fall Mulch Tilled leaving at least 40% of the ground covered by residue after planting Soybeans in the Spring.

Field	Planned Amount	Month	Year	Applied Amount	Date
1	7. ac	11	2018		
Total:	7. ac				

Residue and Tillage Management, Reduced Till(345)

These fields are NHEL and are not required to follow a conservation plan for compliance.

Field	Planned Amount	Month	Year	Applied Amount	Date
2	1.8 ac	11	2018		
Total:	1.8 ac				

CERTIFICATION OF PARTICIPANTS

t10927

HERITAGE VALLEY LLC	DATE
---------------------	------

CERTIFICATION OF:

DISTRICT CONSERVATIONIST	
<i>Gregory A Townley</i>	<i>11-20-18</i>
GREGORY A. TOWNLEY	DATE

CONSERVATION DISTRICT	
POWESHIEK SOIL & WATER CO	DATE

PUBLIC BURDEN STATEMENT

According to the Paperwork Reduction Act of 1995, an agency may not conduct or sponsor, and a person is not required to respond to a collection of information unless it displays a valid OMB control number. The valid OMB control number for this information collections is 0578-0013. The time required to complete this information collection is estimated to average 45/0.75 minutes per response, including the time for reviewing instructions, searching existing data sources, gathering and maintaining the data needed, and completing and reviewing the collection information.

PRIVACY ACT

The above statements are made in accordance with the Privacy Act of 1974 (5 U.S.C 522a). Furnishing this information is voluntary; however failure to furnish correct, complete information will result in the withholding or withdrawal of such technical or financial assistance. The information may be furnished to other USDA agencies, the Internal Revenue Service, the Department of Justice, or other state or federal law enforcement agencies, or in response to orders of a court, magistrate, or administrative tribunal.

USDA NON-DISCRIMINATION STATEMENT

The U.S. Department of Agriculture (USDA) prohibits discrimination against its customers. If you believe you experienced discrimination when obtaining services from USDA, participating in a USDA program, or participating in a program that receives financial assistance from USDA, you may file a complaint with USDA. Information about how to file a discrimination complaint is available from the Office of the Assistant Secretary for Civil Rights. USDA prohibits discrimination in all its programs and activities on the basis of race, color, national origin, age, disability, and where applicable, sex (including gender identity and expression), marital status, familial status, parental status, religion, sexual orientation, political beliefs, genetic information, reprisal, or because all or part of an individual's income is derived from any public assistance program. (Not all prohibited bases apply to all programs.) To file a complaint of discrimination, complete, sign, and mail a program discrimination complaint form, available at any USDA office location or online at www.ascr.usda.gov, or write to:

USDA Office of the Assistant Secretary for Civil Rights
1400 Independence Avenue, SW.
Washington, DC 20250-9410

Or call toll free at (866) 632-9992 (voice) to obtain additional information, the appropriate office or to request documents. Individuals who are deaf, hard of hearing, or have speech disabilities may contact USDA through the Federal Relay service at (800) 877-8339 or (800) 845-6136 (in Spanish). USDA is an equal opportunity provider, employer, and lender. Persons with disabilities who require alternative means for communication of program information (e.g., Braille, large print, audiotape, etc.) should contact USDA's TARGET Center at (202) 720-2600 (voice and TDD).